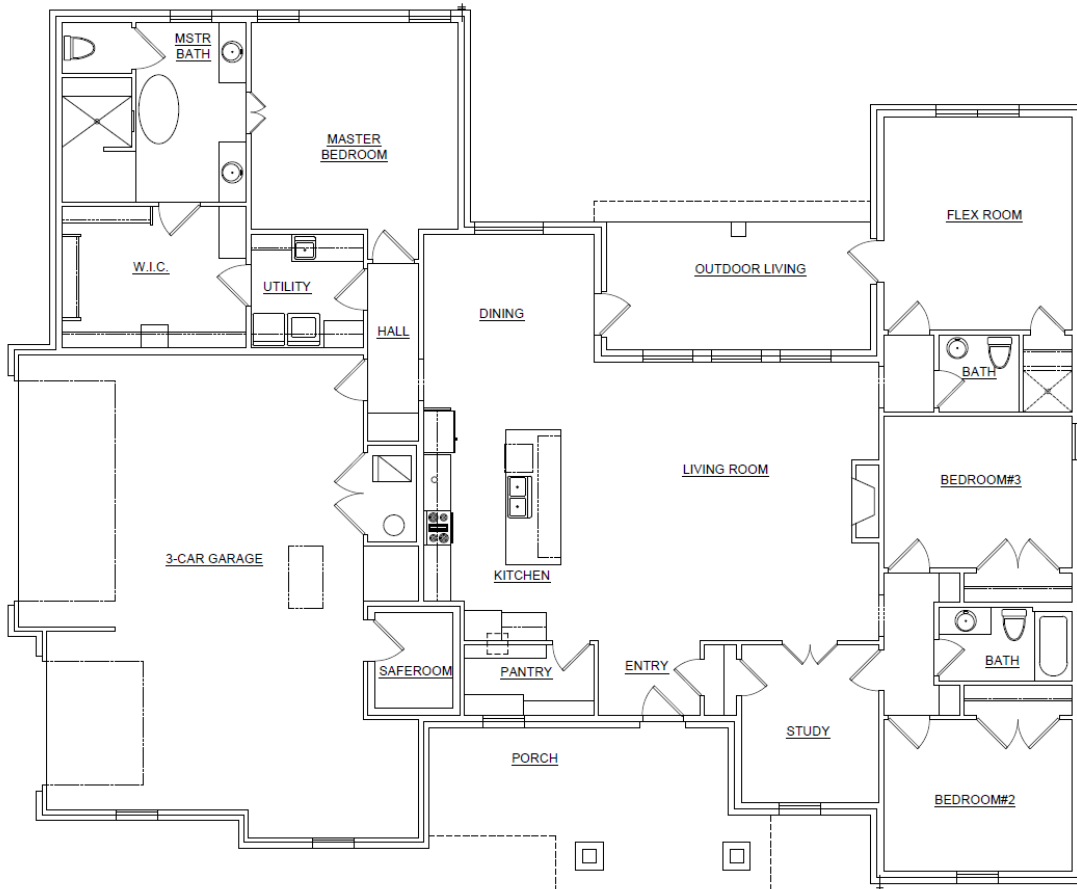


HILL'S LAND & CONSTRUCTION CO.



*** RENDERINGS/PICTURES SHOWN ARE FOR ILLUSTRATION PURPOSE ONLY.***



1340 Glenwood Drive
Lot 5 Block 3 Hill's Whispering Meadows
2700 square feet
.71 Acres MOL

JUST RIGHT **Just What You Wanted**

Here it is ... Just what you wanted: Spacious Master Suite, walk-in shower, seasonal closet; "Where it's needed Utility"; Country Kitchen with center island & walk-in pantry; Bright & Open Living Mudroom with locker storage; and Private Outdoor living area, Gorgeous treed acreage. All with what you need: Hill's Superior Quality & Craftsmanship, Hill's Exclusive Neighborhood Promise and above all Hill's Integrity.

Price Range: \$530,000.00 to \$555,000.00

*Price will vary depending upon custom options.

WWW.HILLSLAND.COM

Trade-ins accepted

(405)-520-4906

10 Whispering Lakes Drive, Tuttle, Oklahoma
(405) 392-5690

(405)-520-4907