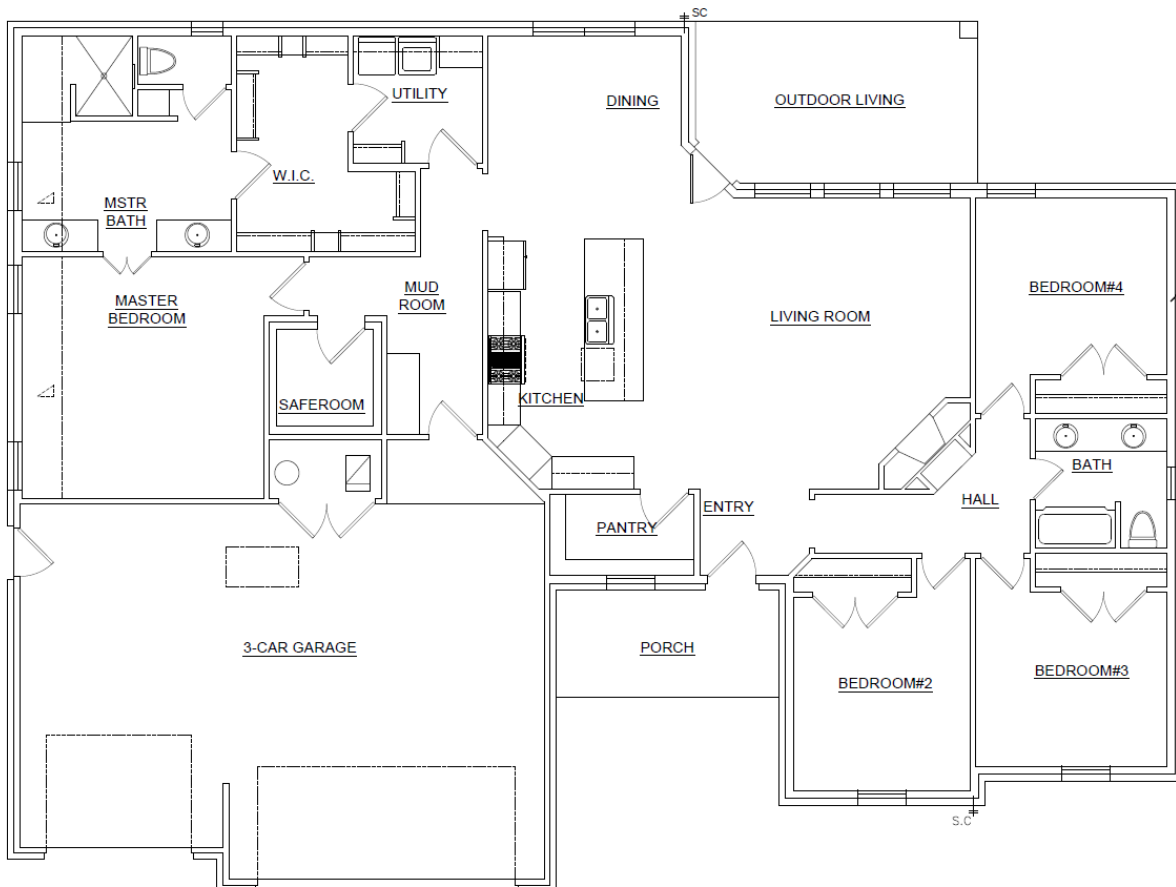


HILL'S

LAND & CONSTRUCTION CO.



*** RENDERINGS/PICTURES SHOWN ARE FOR ILLUSTRATION PURPOSE ONLY.***



1025 Noah Place
Lot 27 Block 2 Hill's Whispering Meadows
2354 square feet
.70 Acres MOL

Dream Home

A dream home from the "Dream Home" team at Hill's Land & Construction. The serene acreage along with the craftsmanship, and matchless quality in this new home can make your dreams come true. Come take preview.

Price : \$449,800.00

WWW.HILLSLAND.COM

Trade-ins accepted

(405)-520-4906

10 Whispering Lakes Drive, Tuttle, Oklahoma
(405) 392-5690

(405)-520-4907